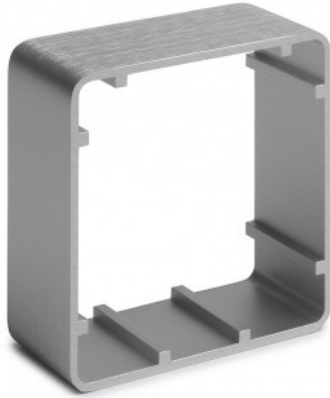


STP-SPB-SS



SURFACE SINGLE GANG ALUMINIUM SHROUD

This 85mm square spacer is useful for enabling flush mounted exit buttons/key switches to be surface mounted. It acts as a shroud around a standard single gang electrical back box that is surface mounted.

FEATURES

- Anodised aluminium (brushed finish)
- Single gang size
- Radiused corners

TECHNICAL INFORMATION

- Dims: 85mm(H) x 85mm(W) x 40mm(D)

RELATED PRODUCTS



STP-NT200



STP-SPB003F



STP-SPB004F



STP-SPB004F(W)