

STP-GD830S-12



12VDC WALL MOUNT DOOR RETAINER

This surface mount door retaining magnet is typically linked to a fire alarm to allow the door to close in the event of an emergency situation. The door must also be fitted with a spring loaded door closer.

FEATURES

- Surface mount
- Black cast alloy body
- Armature plate included (GD830ARM)
- Override button enables manual release

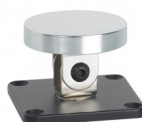
TECHNICAL INFORMATION

- Up to 32kg (70lb) holding force
- Current draw = 120mA @ 12Vdc

RELATED PRODUCTS



STP-DRM-135-24



STP-GD830ARM



STP-GD830S-24