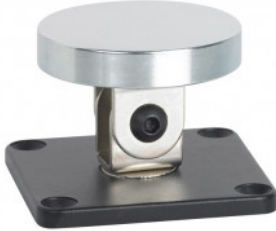


STP-GD830ARM



ARMATURE PLATE FOR GD830 RANGE

Replacement/spare armature plate for the GD830 range of door retaining maglocks.

FEATURES

- Black cast alloy base plate
- Bright zinc plated armature plate
- Tilt adjustment
- Compatible with both floor and surface mount retainers

RELATED PRODUCTS



STP-GD830S-12



STP-GD830S-24