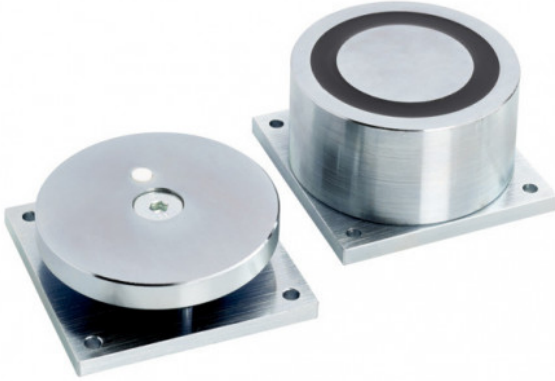


STP-EXT-R12/24

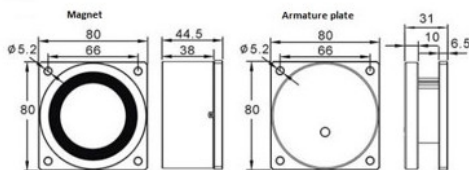


EXTERNAL ROUND STAINLESS STEEL MAGLOCK 12/24VDC

This stainless steel round maglock is suitable for outdoor use (e.g. gates/barriers) due to its weatherproof construction and is ideal for use as a hold-open device. Suitable for 12Vdc or 24Vdc operation.

FEATURES

- Stainless steel casing
- Weatherproof
- Dual voltage
- Anti-residual magnetism feature
- Fail safe (=power to lock)
- Square base plate with 4 x fixing holes (5mm dia.)



TECHNICAL INFORMATION

- Up to 236kg (520lbs) holding force
- Operating voltage: 12/24Vdc
- Current draw: 200mA @ 12Vdc/100mA @ 24Vdc
- Pre-wired with 300mm cable
- Maglock Dimensions: 78mm dia. x 45mm depth.
- Armature plate: 78mm dia. mounted on square base-plate with 4 x fixing holes (5mm dia.)
- Weight: 2kg (approx.)

RELATED PRODUCTS



STP-DG500



STP-SPB004S(W)



STP-SPB050



STP-WWG7-220G(M)