

## STP-CM41/4



### SURFACE 10CM ROUND SWITCH WITH DISABLED LOGO

Stainless steel DDA compliant push to open button with disabled logo. Suitable for surface mount using the black plastic back-box supplied.

#### FEATURES

- Engraved 'PUSH TO OPEN'
- Large button can be operated from any angle
- Concealed security fixings (tamper proof)
- Surface mount only

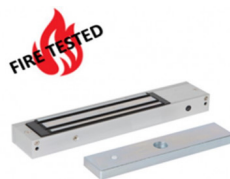
#### TECHNICAL INFORMATION

- Dims: 130mm(H) x 130mm(W) x 75mm(D)
- Button dia. = 112mm
- Switch type: SPDT
- Switch rating: 2A @ 48Vdc
- Stainless steel face-plate
- ABS black plastic back-box

## RELATED PRODUCTS



STP-CP3-LSRC-DB



STP-EM02-FIRE



STP-SPB009S



STP-VCKPK