

STP-EM500ZL-DC

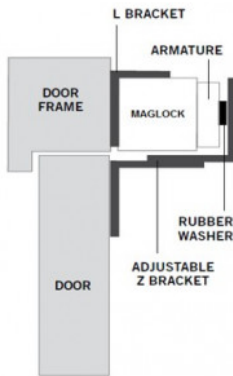


DOUBLE COVERED Z & L BRACKET FOR STANDARD MAGLOCK

Architectural Z & L bracket with curved covers on both the Z and the L giving a more aesthetically pleasing appearance. Suitable for use on inward opening doors the Z bracket is fully adjustable to cater for recessed doors.

FEATURES

- Compatible with all standard cased maglocks from SSP
- Anodised aluminium finish
- Fully adjustable
- Architectural design improves aesthetics
- 2 brackets required for double maglocks



TECHNICAL INFORMATION

Technical Information

- 2 brackets required for double magnets
- Dimensions: Z Bracket = 270mm(L) x 97mm(D) x 105mm(H); L Bracket = 270mm(L) x 30mm(W) x 75(H)
- Maximum adjustment = 30mm

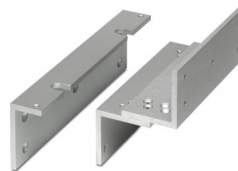
RELATED PRODUCTS



STP-EM10



STP-EM500CL



STP-EM500ZL



STP-EM60DS