

## EB200N



### 12VDC FAIL SAFE 38MM WIDE SOLENOID BOLT

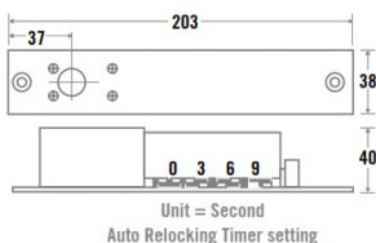
This solenoid bolt provides a secure locking method for single or double-action doors and includes door positioning and variable re-locking delay.

#### FEATURES

- Microswitched
- 12Vdc
- Fail safe
- Door position monitoring

#### TECHNICAL INFORMATION

- Input voltage: 12Vdc  $\pm 10\%$
- Activating current 900mA @ 12Vdc
- Holding current 300mA @ 12Vdc
- Monitoring contacts: SPDT (COM, NO, NC) rated 250mA @ 30Vdc
- Re-lock delay settings: 0s, 3s, 6s, 9s
- Bolt diameter 15.5mm
- Bolt throw 16.5mm



## RELATED PRODUCTS



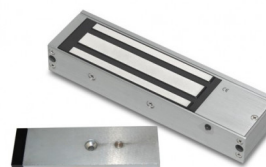
CP3



DRB001



EB180



EM20DS